

CITY OF COQUITLAM NORTHWEST BURKE VISION

COMMUNITY INFORMATION SESSIONS

We want to hear from you!

The City is developing a long range vision for future residential growth on a portion of Burke Mountain and an adjoining area west of the Coquitlam River, to identify new neighbourhoods while maintaining sensitive natural areas. Known as the Northwest Burke Vision, this project involves lands at the north end of Coast Meridian Road and quarry land along Pipeline Road (see map on reverse).

Before new neighbourhoods can be built, we need to first plan for the location and size of roads, water pipes and sewer pipes. We are also exploring ideas of what these neighbourhoods could include, such as different housing types, parks, open spaces and trails, local businesses and a possible school.

Please plan to attend one of two Community Information Sessions to learn about the visioning process and to share your thoughts and ideas.

SESSION 1

SATURDAY, JUNE 25, 2016 | 11 A.M. - 4 P.M.

SESSION 2

WEDNESDAY, JUNE 29, 2016 | 4 - 8 P.M.

LOCATION

VICTORIA HALL, 3435 VICTORIA DRIVE

Stay Informed

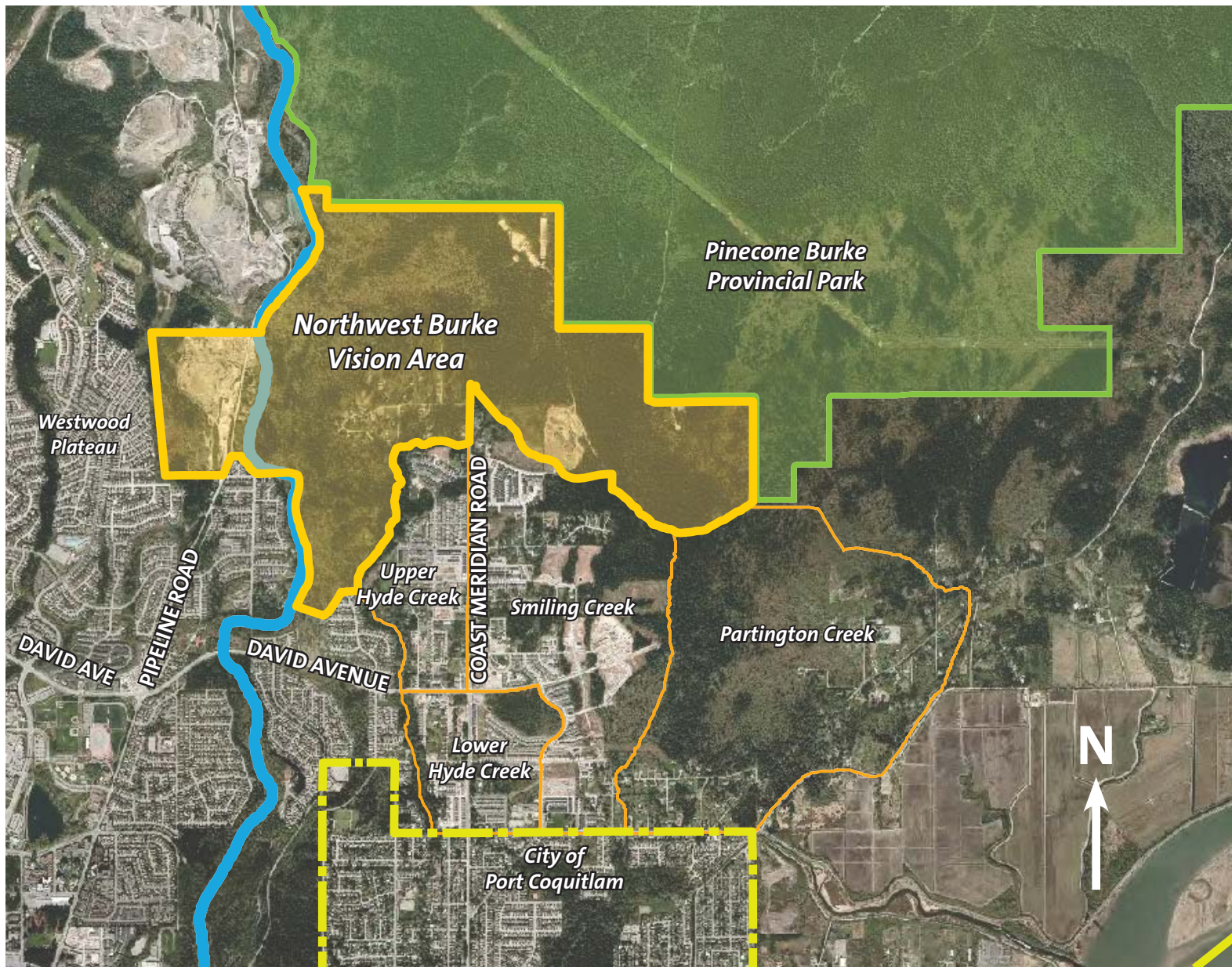
Visit coquitlam.ca/NBV and sign up to receive project updates.

coquitlam.ca/NBV



CityofCoquitlam





Check out the City's website for more information!

Visit coquitlam.ca/NBV for reports and studies completed to date.

Visit the Burke Mountain webpage for up-to-date information on the many different projects and initiatives underway on Burke Mountain. coquitlam.ca/Burkemtn


Those interested in neighbourhood updates and development of northeast Coquitlam are invited to sign up for Burke Mountain Email Updates at coquitlam.ca/Burkemtn or follow the City's social media channels, including Facebook and Twitter for news and information.

CONNECT WITH US

CITY OF COQUITLAM PLANNING & DEVELOPMENT DEPARTMENT

 coquitlam.ca/NBV

 planninganddevelopment@coquitlam.ca

 604-927-3430

    [CityofCoquitlam](https://www.cityofcoquitlam.ca)

Coquitlam
125